



The

Quarterly Beet

Summer 2023 Edition

<https://www.washakiecd.com>

208 Shiloh Road
Worland, WY 82401



Calendar of Events

June

19- 4H Cloverbuds at the Worland Community Garden

19- WCCD Board Meeting in Worland

22- Adopt a Highway Clean Up

July

4- Office Closed for Holiday

7- Wyoming State Forestry Big Horn Mountains Landowner Field Day

12- Wyoming Environmental Stewardship Day

15- WCCD hosts STEAM at Washakie Museum & Cultural Center, Solar Cooking

17- WCCD Board Meeting in Ten Sleep

22-29th- Washakie County Fair, Come see our booth!

July 29- Washakie County Fair Jr. Livestock Auction

August

16- First Day of School for Ten Sleep and Worland Schools

16-Learn & Work Program, Tour of Bryant Honey

21- WCCD Board Meeting in Worland

22-25 NACD Southwest/Pacific Region Meeting

September

4- Closed Labor Day

9-Harvest Fest, Announce FoodScape Winners!

18- WCCD Board Meeting in Worland

FoodScape Contest Seeks Participants

The Conservation District is hosting a FoodScape Contest to encourage food production and resource management principles such as water and soil conservation. Prizes will be awarded for 1st-3rd place.

But what exactly is a FoodScape? A FoodScape uses attractive edible, medicinal and perennial plants to create a functional and beautiful garden that provides food for human consumption or wildlife benefit.

The Worland Community Garden is offering a free transplant of chives for all who enter the contest. Registration forms and guidelines can be found here: <https://www.washakiecd.com/public-events.html>

Other general resources for planning and landscaping can be found here: <https://tinyurl.com/Colorado-Scape-Design>



Worland Students to Attend WYRED

Four students from Chief Washakie FFA will attend the Wyoming Youth Resource Education Days through a WCCD Sponsorship. Asael Vega, Zane Lentsch, Chance Hart and Beckett Tharp will have the opportunity to learn about plant identification, soils, wildlife habitat, water resources, GPS and map skills, and much more. The week is spent on the ground working with local ranches and seeing best (conservation) management practices at work.

Wyoming Youth Resource Education Days

June 26-29, 2023

Town of Sheridan, WY



Washakie County Community Programs



WCCD Honors Ten Sleep Recycling Trailer Project

The Ten Sleep High School National Honor Society had been running the town's recycling program under the direction of Chawna Wiechmann for many years when community member Shreve Stockton had the idea to give the trailer a facelift. She presented the idea to the WCCD Board of Supervisors, who provided the financial backing to move the project forward. Additional funds were secured by a grant from the Wyoming Arts Council, with support from the National Endowment for the Arts and the Wyoming Legislature. Art teacher, Shara Mills provided the artistic capital to complete the mural project by involving all of her art students grades K-12. The result is a stunningly beautiful natural resource themed trailer that highlights the beauty of the surrounding area.

WCCD presented WCSO #2 teachers Mills and Wiechmann with certificates of recognition at the Culture Fest in Worland on June 17th where the pair spoke about the project. Student Artist, Grace Gertsch also took the stage, relating this art project as a community endeavor rather than a solo art project.

Milo Vega, who made a donation toward the cost of sealing the trailer, was also recognized.

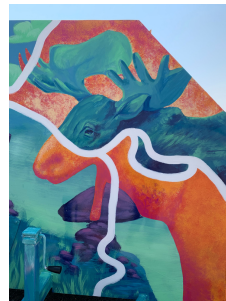
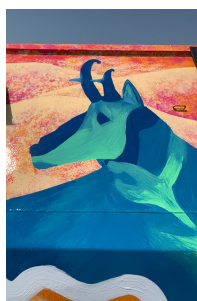
Dirt Cheap Gardening Mentor Program

On March 6th of this year, Caitlin Youngquist of the UW Washakie County Extension hosted a "Dirt Cheap Gardening" class to help beginner gardeners get started with growing their own food without a lot of up front cost. In conjunction with that training and the FULL Campaign, WCCD selected four beginner gardeners (first come, first serve) to mentor and support throughout this growing season. Regular site visits have been made by Janet Hofmann, WCCD Education Coordinator. Janet has enjoyed offering troubleshooting advice, free seeds from the Grow A Little Extra Program, and moral support to this year's participants.

"Every family that begins to grow a garden, conserves water and learns food production skills, strengthens the vitality and preparedness of the whole community," said Hofmann.



Above: Garden mentee, Austan Paulk installs drip line and mulch for water conservation.
Below: Close ups of trailer mural.



Board Supervisor and District Manager Updates

Xeriscaping... with Jaci Harkink



What if there was a way to reduce summertime water bills by at least 50%? In my newly elected position in the Urban position of the WCCD Board of Supervisors, the word XERISCAPE caught my eye while looking at the Washakie County Conservation District website. I had to investigate immediately. What I found is something I didn't expect and with a lot of potential benefits. I recently xeriscaped my yard and want to share what I learned.

My name is Jaci Harkink. I was born and raised in Worland. Once I graduated, I moved to Indiana. I earned my Bachelor of Arts degree in Biology from Purdue University. I moved back to Wyoming to pursue my passion for our wildlife and wildlands. I was elected to the Conservation District Board of Supervisors in November and I am a part of the Wyoming Naturalist Program.

What is xeriscaping? It is landscaping that requires little or no irrigation. Think of the money that could be saved if you had a little less lawn to water! This is only one of the reasons I chose to landscape this way. Another reason, for me, is to have plants with uses that are beneficial. I have chosen plants that are native to Wyoming and many have medicinal properties. My yard will be full of color and uses!

Soil health is also part of my reason to xeriscape. Traditional lawns use Kentucky Bluegrass. While it looks very uniform and beautiful on top, below it is not doing much for the soil. This grass has very shallow roots and when there is a lot of moisture, it cannot hold onto the topsoil very well. These shallow roots are also why this grass needs so much water! Native plants to Wyoming have deeper, more branched roots which help hold that precious soil in place and create pockets deep down for water infiltration.

I know my yard will look different than most. There will be Wyoming native plants improving the soil health and using less water in every corner! I hope this change inspires other property owners to explore xeriscape as an option. Please reach out to our conservation district for resources and potential cost-share opportunities.

Photo above: A primrose from Jaci's landscaping.

BLM Action Updates



WCCD provided comments on the Proposed Conservation and Landscape Health rule that the BLM released on April 3, 2023. With no stakeholder engagement prior to releasing the proposed rule, the tone was set for pushback from western ranchers and farmers as the BLM seeks to elevate conservation as a use through conservation leasing which could potentially preclude other multiple uses.

With a meager 15 day extension in the commenting period, comments are now due on July 5, 2023. You can learn more about the proposed rule by visiting our Facebook page, and you can read WCCD comments provided on June 19, 2023 to the BLM by visiting our website at www.washakiecd.com.

WCCD Cost Share Programs

Applications are due for the Upper Bighorn Sub-Basin Watershed Program on the first Friday of July for Batch #2 ranking by the Washakie Watershed Steering Committee. This cost-share program provides up to 60% cost-share on projects within the watershed that will implement Best Management Practices to improve water quality on the Big Horn River, Sage, Slick, Nowater and Fifteen Mile Creeks. Applications can be found on our website under Cost Share Programs.

Washakie County Fair Jr. Livestock Sale

Save the date! This annual sale is scheduled for July 29th, 2023 at the Washakie County Fairgrounds. The sale is a way to support the youth of Washakie County as they learn livestock production and herdsmanship. Businesses and individuals typically bid on animals to support local 4H Members from Ten Sleep and Worland.

Youth Education Programs

2023 NACD ONE-WATER POSTER CONTEST

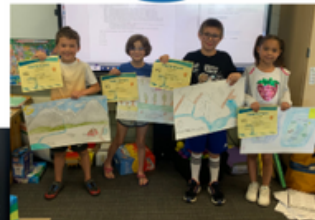
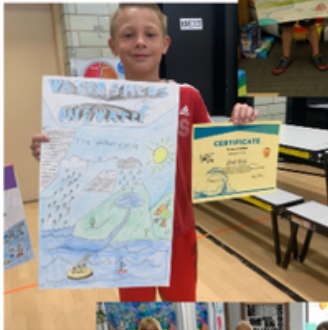
DISTRICT WINNER OLIVE TRUMAN

Worland and Ten Sleep Schools 2nd and 3rd Grade Classes were invited to submit entries about keeping our watersheds clean!



4H Cloverbuds

planting flowers at the Community Garden after a garden tour where they had the opportunity to taste test some fresh herbs!



West Side Summer School
Students learn about food waste reduction.

Facebook Kids Corner

"We Need Bees" was posted on our Facebook page as part of our monthly Kids Corner series. Look for Kids Corner posts on the first Friday of every month. Each posts is jam packed with educational activities and links based on a natural resource topic for children.



**WYOMING BOYS SCHOOL
LEARN & WORK PROGRAM**

Filling raised beds with organic matter.

A lesson on ecosystems.

Prepping the beds for planting.



Supplement

CHICKEN FEED

WITH TABLE SCRAPS FOR SAVINGS



Did you know that between 30-40% of food in the US is wasted? You can reduce landfill contribution and feed cost by sorting and feeding your food waste to your backyard flock.

To Get Started: Obtain a counter top compost bin to sort food scraps into. An old coffee can will do. Start sorting! Feed your chickens the contents every 1-2 days.

What's Safe to feed Chickens?

YES

- Bread: Avoid feeding moldy bread.
- Cooked meats: Meat (not poultry) can provide a good source of protein on occasion.
- Fruits.
- Grains.
- Greens.
- Squash: Split squashes in half before offering them to your birds.
- Starches: Cooked, raw, or dried corn and peas are all safe options. Your chickens might also enjoy cooked potato or sweet potato scraps.
- Vegetables.
- Inedible parts of produce that would normally go in the trash should go to the chickens.

NO

- Alcohol.
- Avocado skins and pits: These contain persin, a fungicidal toxin, that can be fatal to chickens.
- Caffeine.
- Chocolate.
- Nightshade leaves: Do not feed your chickens leaves or greens from any plants in the nightshade family, including tomatoes, potatoes, eggplants, and peppers. Though nightshade leaves are toxic, the fruits and vegetables from these plants are perfectly fine for chickens to consume.
- Processed foods.
- Spoiled foods.
- Raw meat.
- Raw potato peels: Potato peels, especially when green due to sunlight exposure, contain solanine, which is toxic.



208 Shiloh Rd
Worland, WY 82401
307-347-2456

NRCS & FSA Agency Updates

WaterSMART funds for Upper Hanover Canal Users

NRCS is accepting Environmental Quality Incentive Program (EQIP) applications for Upper Hanover Canal projects. These applications will be for fiscal year 2024. The Hanover Irrigation District in Washakie County, WY used Bureau of Reclamation WaterSMART funds to replace the aging Cottonwood Check and Spill structure and install data meters. The structure delivers water from the Boysen Reservoir through the Big Horn River to the Hanover Canal which supplies water to over 13,700 acres of farmland and 513 users who depend on the water and crops produced for their livelihood. The improvements are expected to save 1,165 acre-feet per year. With NRCS assistance, crop and livestock farmers will be able to improve soil moisture management, convert dirt ditches to buried pipe, improve irrigation efficiencies, and improve irrigation water management systems. Water savings by these additional improvements are expected to be significant and will vary across the diversity of irrigated crops including sugar beets, corn, small grains, and alfalfa. In addition to the water savings and drought resiliency benefits, EQIP funds help improve soil health, protect crop health, and reduce sediment, nutrient, and pathogen loads to the Big Horn River, an impaired stream on the 303d list. Please reach out to the Worland Field Office with any questions you may have or to obtain an application, 307-347-2456, Ext. 108.

Contact Information

Board of Supervisors

Daniel Greet, Chairman
Susan Pennington, Vice Chairwoman
Jaci Harkink, Secretary/Treasurer
Charley Orchard, Board Member
Keith Bower, Board Member

WCCD Employees

Amanda O'Keefe, District Manager EXT. 101
Janet Hofmann Education Coordinator EXT. 121
Ben Vega, Seasonal Outdoor Maintenance

NRCS Technical Support Staff

Emma Allen, District Conservationist EXT. 108
Allen Croft, Civil Engineer EXT. 122
Blaise Allen, Regional Rangeland Mgmt Specialist EXT. 109
Caleb Salzmann, Rangeland Mgmt Specialist, EXT. 114
Kaile Brant, Soil Conservationist EXT. 119
Erick Hayes, Soil Conservationist EXT. 107

Call us at 307-347-2456 and enter the extension above.



FSA Update

Notices of Loss - if you incur crop losses, grazing losses, livestock losses, or honeybee losses please contact the office to file a Notice of Loss (NOL) as soon as the loss is apparent. Many programs, NAP being one of them, only allow 15 days for the reporting of the loss. Causes of loss are dependent upon the program, but common causes for this time of year include, but are not limited to drought, lightning, and flooding. It is much easier to have a successful application if you file your losses timely and keep good records of the loss event. For NAP producers, please also remember to contact the office before you graze or choose not to harvest a covered hay crop. Having an appraisal or other record of production is vital to completing the loss claim.

Production - Those of you who had spring crops and perennial hay covered by NAP (Noninsured crop disaster Assistance Program) in 2022, need to submit your 2022 production by July 15, 2023. This is also a good time to remind you to provide your 2023 production to the office when you complete your haying. If you decide to graze or leave your hay crop unharvested, please contact the office before you put cows or sheep on the field(s). 307-347-2456, Ext. 105.

